

CAML-EVB EVACUATION (TO BARREL) SYSTEM

- Load resin into barrels
- Evacuate regrind from granulators
- Quiet, efficient operation
- No tools required to change drums

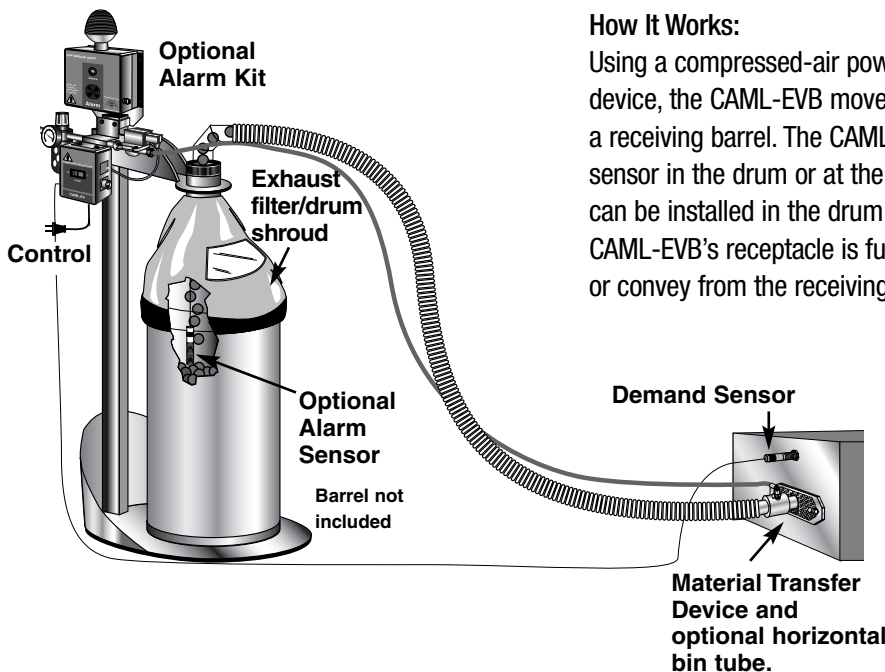


CAML-EVB shown with optional Drum Full Alarm Kit

MOVE YOUR MATERIAL WITH SIMPLE, QUIET COMPRESSED AIR

The CAML-EVB is designed to load barrels with material it evacuates from granulator bins, gaylords or storage hoppers. You get the same reduced noise and simple operation provided by other CAML models. A simple on/off

control eliminates load and dump-time settings. The CAML-EVB uses a compressed air powered Material Transfer Device (MTD) to move material from the bin to the drum.



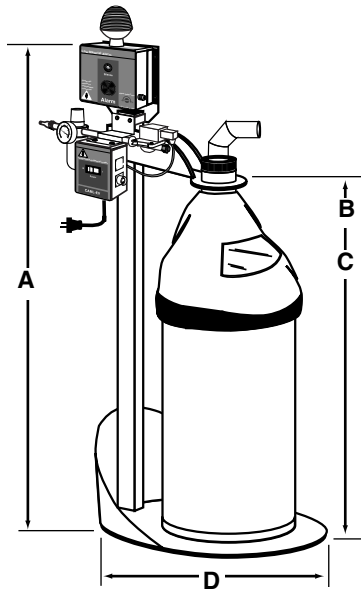
How It Works:

Using a compressed-air powered MTD connected to a pickup device, the CAML-EVB moves material from the material source to a receiving barrel. The CAML-EVB can be configured with a demand sensor in the drum or at the material source. An optional sensor can be installed in the drum to provide a fill alarm. When the CAML-EVB's receptacle is full, simply replace it with another drum or convey from the receiving drum to another destination.

The standard CAML-EVB includes:

- A proximity-type demand sensor
- Control assembly with solenoid and air filter/regulator
- Barrel stand with adjustable arm
- Exhaust filter/barrel shroud
- MTD (Material Transfer Device)
- 20 feet of conveying hose

CAML-EVB EVACUATION (TO BARREL) SYSTEM



MODELS	CAML-EVB
Performance characteristics	
Maximum throughput lb/hr {kg/hr}	700 {318}
Nominal throughput * lb/hr {kg/hr}	500 {227}
Maximum conveying distance ft {m}	20 {6}
Material line size in. {mm}	1.5 {38}
Dimensions inches {mm}	
A - Overall height with alarm option	57 {1448}
B - Maximum height, adjustable arm	46 {1168}
C - Minimum height, adjustable arm	30 {762}
D - Drum stand base diameter	25 {635}
Weight lbs {kg}	
Shipping	130 {59}
Installed	90 {41}
Voltages Total amps	
120V/1 phase/60 hz	1.0
Compressed air requirements	
Typical operating pressure psi {bars}	30 {2.1}
Consumption @ 60 psi ft ³ /min {liters/min}	8.25 {233.6}
NPT fitting	3/8 in.

SPECIFICATION NOTES

*Recommended throughput rates are provided to insure optimum performance and life of the product.

Specifications can change without notice. Contact your Conair representative for the most current information.

OPTIONS

Material Pickup Devices



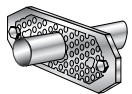
O-ring Adapters

Connect the Material Transfer Device to material lines with equal or larger outer diameters.



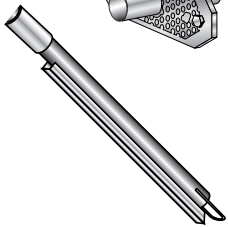
Horizontal Bin Tube

Install the Material Transfer Device on granulator trays, bins or other flat-walled storage containers.



Vertical Feed Tube

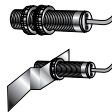
Inserts into open material containers. Includes a coupling for the Material Transfer Device.



Granulator Bin Tube Adaptor

Adapts round granulator drawer tubes (up to 2 inch OD) to the material transfer device and provides air inlet for optimal conveying.

Sensor Mounting Options



Demand Sensors

Proximity sensor with O-ring mounts through the wall of a hopper or bin. The sensor with an angled bracket allows external mounting against a sight glass on a bin.



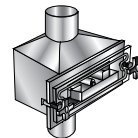
Sensor Extension Cable

“Drum Full” Alarm Kit



Includes the audible/visual alarm and a proximity sensor to indicate when the bin or drum is full.

Drawer Magnet



Install between the 90° inlet tube and the drum filter/shroud to catch tramp metal before it can enter the barrel.

Energy Miser

Provides adjustable on and off time periods for conveying. Ideal when full time evacuation is not required.