

COMPRESSED AIR MATERIAL LOADERS

CAML-M Micro Loader

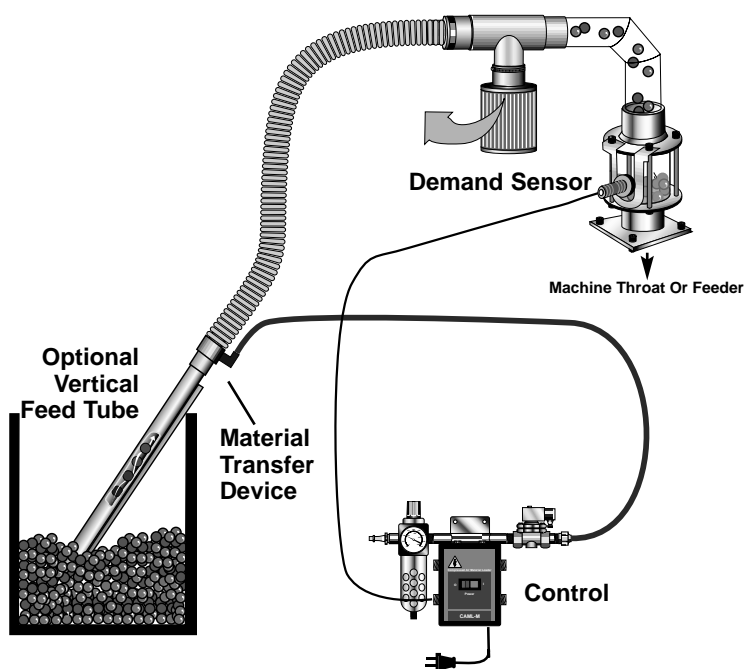
- **JUST-IN-TIME LOADING TO MACHINE THROAT OR TO FEEDERS**
- **FOR SMALL CAPACITY CONVEYING OF SINGLE MATERIAL**
- **QUIET AND EFFICIENT**
- **PUSH-FIT DESIGN FOR EASY MAINTENANCE**



Move your material with simple, quiet compressed air

The CAML-M reduces noise and eliminates complexity in a low profile design that adds only inches to your hopper or bin height. A simple on/off

control eliminates load and dump-time settings. The efficient Material Transfer Device (MTD) utilizes less compressed air to move material.



How It Works:

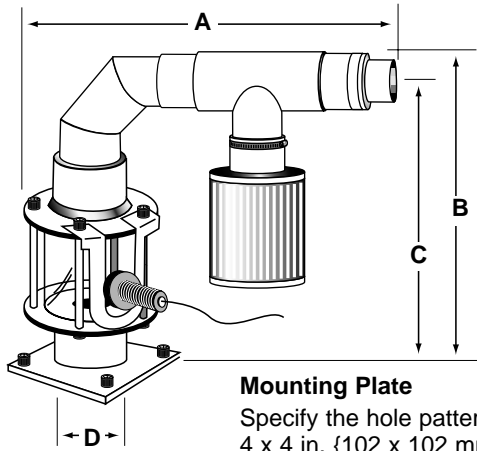
The CAML-M is designed to convey material from a variety of sources. The CAML-M uses a compressed air powered Material Transfer Device to convey material directly to your machine throat or feeder. Conveying air is exhausted through a long-life filter cartridge.

The standard CAML-M includes:

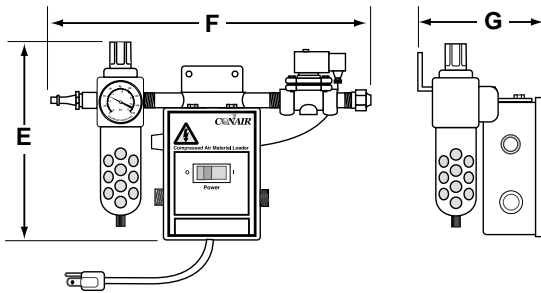
- A proximity-type demand sensor
- Control assembly with solenoid and air filter/regulator
- MTD (Material Transfer Device)
- 20 feet of conveying hose

SPECIFICATIONS

**COMPRESSED AIR MATERIAL LOADERS
CAML-M Micro Loader**



Mounting Plate
Specify the hole pattern for a
4 x 4 in. {102 x 102 mm} or
6 x 6 in. {152 x 152 mm} plate.



MODELS	CAML-M
Performance characteristics	
Maximum throughput lb/hr {kg/hr}	350 {159}
Recommended throughput * lb/hr {kg/hr}	60 {27}
Maximum conveying distance ft {m}	15 {4.6}
Material line size in. {mm}	1.25 {31.7}
Dimensions inches {mm}	
A - Loader width	11.5 {292}
B - Height above mounting plate	10.5 {267}
C - Height to center of material inlet	9.87 {251}
D - Discharge hole diameter	1.625 {41.3}
E - Control height	8 {203}
F - Control width	10 {254}
G - Control depth	5 {127}
Weight lbs {kg}	
Shipping	20 {9}
Installed	15 {7}
Voltages Total amps	
120V/1 phase/60 hz	1.0
Compressed air requirements	
Consumption @ 60 psi ft ³ /min {liters/min}	8.25 {233.6}
NPT fitting	3/8 in.

SPECIFICATION NOTES

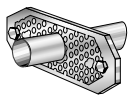
*Recommended throughput rates are provided to insure optimum performance and life of the product. Specifications can change without notice. Contact your Conair representative for the most current information.

OPTIONS

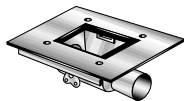
Material Pickup Devices



O-ring Adapters
Connect the Material Transfer Device to material lines with equal or larger outer diameters.



Horizontal Bin Tube
Install the Material Transfer Device on granulator trays, bins or other flat-walled storage containers.

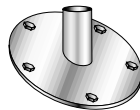


Micro Distribution Box
Install one or two Material Transfer Devices beneath a drying hopper or surge bin.

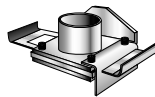


Vertical Feed Tube
Inserts into open material containers. Includes a coupling for the Material Transfer Device.

Mounting Adapter Options

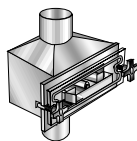


BF6 Feeder
For mounting the loader on a BF6 Feeder bin.



BF0 Feeder/Slide Gate
Load material directly into the auger feeder as needed. The mounting plate and slide gate assembly replaces the BF0 Feeder bin.

Drawer Magnet



Install below the viewing chamber discharge to catch tramp metal before it can enter the machine throat.

Viewing Chambers



4 oz. or 8 oz. viewing chamber discharges

Low Material Alarm



Audible/visual alarm lets you know when there is a material problem.

Sensor Extension Cable

