

TLM MODEL TUBE LOADER

SMALL PACKAGE, BIG LOADING PERFORMANCE



TLM
Hopper Loading
Model with ELC-M
control

TLM
Direct Feed
Model with ELC-M
control

The compact TLM model Tube Loader makes it easy to provide trouble-free automatic loading wherever you need it. Without a traditional conical hopper, the exclusive tube loader design means that your materials will always flow easily from the loader with no bridging or interruptions. Although small, the TLM vacuum loader provides material loading performance comparable to much larger units with a 4.5 inch diameter discharge valve and up to 150 lbs/hr of material transfer. You can be sure that material will never become lodged inside the loader, holding up your production.

COMPACT, ECONOMICAL, TROUBLE-FREE MATERIAL LOADING

Available as both a hopper loader or a direct feed “throat loader,” the TLM’s compact size and ease of use make it a perfect fit for a wide range of loading needs.

Quick disassembly features allow wide open access to the filter and loader body for fast material changes and filter maintenance.

The 3/8 Hp vacuum motor provides up to 150 lbs/hr conveying at nearly 20 feet. A blowback option extends filter life with an adjustable, independent filter cleaning cycle. Hose and feed tube are included so that your loader is ready to go to work, right out of the box.

Units are equipped with the *new* Easy Loading Controls (ELC) featuring bright, clear readouts displaying when the loader is conveying and when it is in demand for material. Additional control functions are available with the addition of the optional ControlMate pendant.

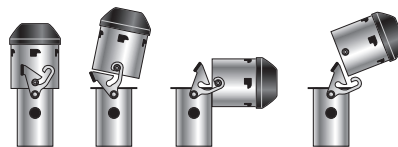
- **Rates up to 150 pounds per hour**
Keep your machines full with material conveyed from up to 20 feet away.

- **Optional ratio valve**
Add a ratio valve to conveniently load regrind along with virgin materials.

- **Full featured control NEW**
The new Easy Loading Control (ELC) and optional ControlMate pendant govern all aspects of your Access Loader including: load time, material demands, purge, ratio and many other loading parameters! *See the Easy Loading Control (ELC) specification sheet for more information.*

- **All stainless construction**
The TLM is constructed of 100% electro-polished 304 stainless steel.

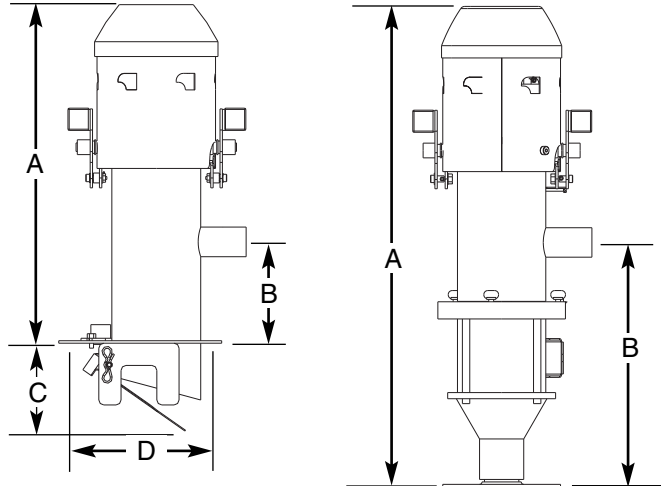
- **Easy access-hinged motor**
No-tools, swing clips open easy for maintenance.



SPECIFICATIONS

SELF-CONTAINED VACUUM LOADERS

TLM MODEL TUBE LOADER



The compact ratio valve fits directly to the TLM inlet and provides a connection to the ELC-M control for precise virgin/regrind time settings.



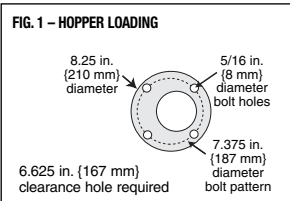
Use the hopper loader model to keep drying, blending and machine hoppers full of material. The large tube opening virtually eliminates material bridging.



The direct feed model allows full view of material flow and may be mounted directly to machine throats, feeders and drawer magnets. A wide range of capacities are available, with or without an isolator valve for throats that are not vacuum tight.

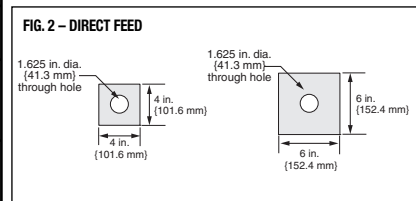
Loader model	TLM
Vacuum motor	3/8 Hp-2 brush
Maximum injection mold machine size	400 tons
Maximum extruder size inches {mm}	1.5 {38}
Recommended throughput* lbs/hr {kg/hr}	150 {68}
Maximum conveying distance ft {m}	20 {6.1}
Loader diameter inches {mm}	4.5 {368}
Loader volume ft³ {liters}	0.1 {4.0}
Material/Vacuum line size inches {mm} OD	1.5 {38.1}
Available voltages, 50/60 Hz	120/220 VAC
Amps @ 120 VAC	8
Amps @ 220 VAC	4
Compressed air requirements	80 maximum psi, 1.4 CFM, NPT fitting: 1/4 in.
Filter area in² {cm²}	132 {852}
Filter type	9 pleat, spun-bond polyester

Hopper Loading Model	
Loader model	TLM
Dimensions inches {mm}	
A - Height above mounting plate	15 {381}
B - Height to center of material inlet	5.5 {140}
C - Depth below mounting plate	5.0 {127}
D - Clearance hole diameter	6-5/8 {167}
Mounting details	Fig. 1
Installed weight lb {kg}	19 {9}
Shipping weight lb {kg}	42 {19}



Direct Feed Model

Loader model	TLM				
Viewing chamber model	1 lb	2 lb	4 lb	15 lb	25 lb
Viewing chamber capacity lb {kg}	1 {0.5}	2 {0.9}	4 {1.81}	15 {6.8}	25 {11.3}
Isolator valve	option	option	standard	standard	standard
Dimensions inches {mm}					
A - Height above mounting plate	24.4 {619.8}	29.6 {751.8}	26.8 {680.7}	32.3 {820.4}	44.3 {1125.2}
B - Height to center of material inlet	12.5 {317.5}	17.6 {447.0}	16.8 {426.7}	22.3 {566.4}	34.3 {871.2}
Mounting details	Fig. 2				
Installed weight lb {kg}	20 {9}	22 {10}	46 {21}	48 {22}	77 {35}
Shipping weight lb {kg}	34 {15}	36 {16}	74 {34}	96 {44}	105 {48}



SPECIFICATION NOTES:

* Throughputs are based on conveying virgin material from close distances. If you convey dusty materials and regrinds, we recommend ordering the optional compressed air blowback feature, and reducing the expected throughput to 75 lb/hr. Conveying at higher throughputs could result in shortened brush and filter life. For higher throughputs, ask about the DustBeater or Access Loader (AL) models or consult with a Conair representative about central vacuum loaders.

Specifications may change without notice. Check with a Conair representative for the most current information.

