

HT SERIES MEDICAL VACUUM SIZING TANK

Advanced, self-centering, removable flip-up guide rollers for ease of cleaning.

PRECISION SIZING FOR SMALL TUBE AND HOSE

HT Series Vacuum Sizing Tanks set the standard for excellence in sizing and cooling small-diameter flexible hose and thin-wall tubing, such as straws and medical tubing.

The “HT” stands for the high technology design, from advanced digital controls (optional) that adjust vacuum levels automatically to precision vacuum and alignment systems that ensure the ability to achieve higher line speeds and throughput while maintaining optimum product quality.

FOR FLEXIBLE OR THIN-WALL PRODUCT

HT tanks are recommended for small, flexible and thin-wall hollow medical extrusions. The HT tank also can be used for non-flexible material with contact tooling.

A telescoping splash tray allows for various tooling styles and sizes.

The precision vacuum system provides more accurate vacuum levels to minimize unwanted chatter marks and blemishes, especially on clear materials.

An integrated, proportional valve aids processing thin-wall tubes at very low vacuum levels.

Specialized non-contact tooling can speed string-up and processing of sticky materials. Optional pre-skinning tooling is available.

■ Easy clean up, low maintenance

The vacuum tank, water reservoir, splash tray and drip trays are stainless steel. Other surfaces are painted for corrosion resistance. Filters keep valves and pumps working freely, while rounded corners and removable guide brackets simplify cleaning and discourage contaminant build-up.

■ Easy to operate

Push buttons start and stop vacuum and water recirculation pumps. An advanced digital control with LED readouts offers automatic adjustment of vacuum levels. Tempered glass lids ensure clear monitoring of product in the process.

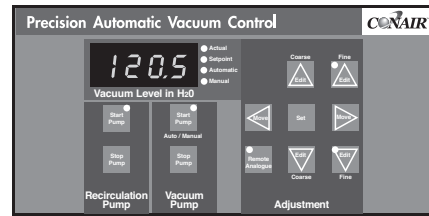
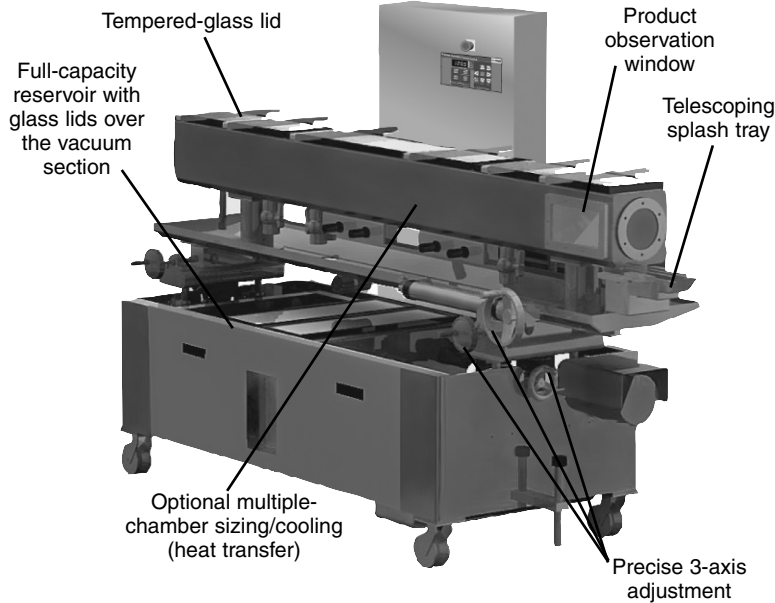
■ Adjustable precision alignment

All HT models include unique, three-axis tank alignment systems that use convenient hand wheel adjustments.

■ Increased consistency; avoid defects

Self-centering, removable flip-up guide rollers, located for maximum product support, can be adjusted to cut setup losses. Two optional, separate vacuum/temperature chambers can work together to improve elongation and increase burst strength of tube and profile extrudates.

HT SERIES MEDICAL VACUUM SIZING TANK



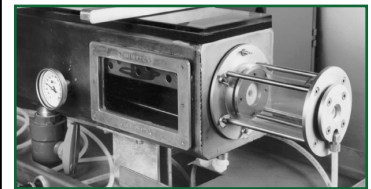
Precision Automatic Vacuum Control (PAVC) (optional)

- The PAVC allows you to set vacuum levels digitally.
- The PAVC controls the vacuum level with a PID program and built-in vacuum transducer.
- The PAVC can be connected to an in-line product gauge for automatic adjustment of the vacuum set point. The PAVC also has a serial port for data acquisition or remote control.
- A remote digital potentiometer is available only with the addition of this option.



MODEL	HT 104-5.0-3	HT 104C-7.0-3*	HT 104C-10.0-4	HT 104C-12.0-4
Performance characteristics				
Tube/profile capacity	up to 2 in. {168 mm}			
Vacuum system†	variable-speed vacuum blower / 0 to 60 in. H ₂ O			
Water system pump	1 Hp {0.75 kW} centrifugal pump			
Tank length ft {cm}	5 {152.4}	7 {213.3}	10 {304.8}	12 {365.8}
Number of compartments	3	3	4	4
Compartment type‡ ft {cm}	1st vacuum, 3 {91.4}	1st vacuum, 5 {152.4}	1st vacuum, 2 {61.0}	1st vacuum, 4 {122.0}
	NA	NA	2nd vacuum, 6 {182.9}	2nd vacuum, 6 {182.9}
	flood seal, 10 in. {254 mm}	flood seal, 10 in. {254 mm}	flood seal, 10 in. {254 mm}	flood seal, 10 in. {254 mm}
	air wipe, 14 in. {356 mm}	air wipe, 14 in. {356 mm}	air wipe, 14 in. {356 mm}	air wipe, 14 in. {356 mm}
Dimensions inches {mm}				
Overall height	73 {1854}	73 {1854}	73 {1854}	73 {1854}
Height to centerline§	42 {1067}	42 {1067}	42 {1067}	42 {1067}
Overall length	60 {1524}	84 {2134}	120 {3048}	144 {3658}
Overall width	39 {991}	39 {991}	39 {991}	39 {991}
Tank compartment cross section	8 x 8 {203 x 203}	8 x 8 {203 x 203}	8 x 8 {203 x 203}	8 x 8 {203 x 203}
Weight lb {kg}				
Shipping	1875 {850}	2075 {941}	2275 {1032}	2475 {1123}
Voltage 240/480 volts, 3-phase, 60 Hz				
Water requirements City, tower or chiller water; main supply line 1 inch NPT fitting				

ADDITIONAL OPTIONS



Pre-skining chamber with tooling inserts for flexible polymers

- Calibrate/quench assembly for flexible materials
- Hold-down guide rollers, contoured or non-contoured
- Split-design air-wipe assemblies

SPECIFICATION NOTES:

* Model HT 104C-7.0-3 is available with four compartments as an option.
 † A variable speed vacuum blower producing 0 to 160 inches {0 to 4064 mm} of H₂O is optional.
 ‡ HT 104-7.0-3 model tank is available with two vacuum compartments as an option.
 § Centerline height is adjustable ± 2 inches {50.8 mm} .
 These tables define standard configurations only. Specifications can change without notice. Contact a Conair representative for the most current information.