



# Material Storage Accessory Equipment

## Level Sensors

- Capacitance Sensors



Rotary paddle switch



Yo-yo level sensor

### Application:

- Monitors the level of material within a silo or surge bin.
- Specific size ranges to fit with your material storage requirements.
- On-demand level sensing.

## Continuous Level Sensors

- PhaseTracker



Ultrasonic sensing devices

### Application:

- Monitors the current level of material within a silo or surge bin.
- Specific size ranges to fit with your material storage requirements.
- Continuous level sensing.
- Used with various types of conveying material.

## Load Cells



Load stand



### Application:

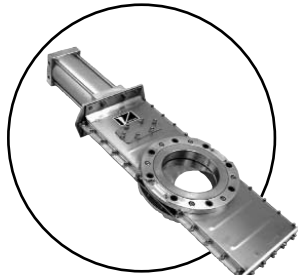
- Monitors silos or other large material storage equipment by measuring overall mass.
- Integrated mounting within your storage vessel's legs or gussets.
- Specific size ranges to fit with your material storage requirements.



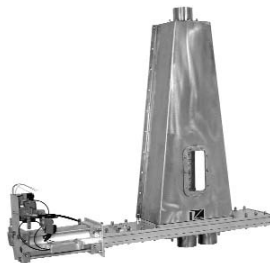
# Material Storage Accessory Equipment

## Valves

- Pneumatic valves
- Diverter valves



Pneumatic knife gate



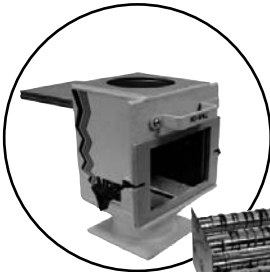
Two-way flex tube diverter

### Application:

- For dry bulk solids using: gravity flow, dilute phasing or vacuum conveying.
- Controls the rate, source or shut-off of material flow of non-abrasive to moderately abrasive materials (powders, granulars or pellets).
- Conveying material from multiple sources for use with a single line material feed tube.

## Magnets

- Metal-outs



Drawer magnet



Metal detector

### Application:

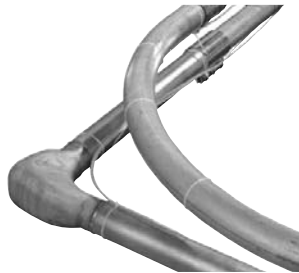
- Removing metal fines from free-flowing material.
- Preventing equipment damage and material contamination due to ferrous material.
- To create a contamination-free material flow.
- Used for high-flow applications.

## Conveying high-wear elbows

- Ceramic-backed elbows
- Nickel-plated elbows
- Stainless steel elbows



High wear elbows



### Application:

- For high throughput and/or highly abrasive material conveying applications.
- Replacing conventional conveying elbows, reducing downtime and loss of material.