

SELF-CONTAINED VACUUM LOADERS

Z2HL and Z2DF Models



QUICK-CLEAN DESIGN WITH MODULARITY TO GROW

The Z Loader's modular design is more flexible and efficient than traditional hopper loaders.

No-tools access and push-fit assemblies provide fast clean-out for quick material changes. Just twist and pull to remove the loader body from the receiving hopper for cleaning or maintenance.

Conair's mix-and-match components and options allow the Z Loader to be configured for dozens of applications. You can even interchange a gravity discharge with a direct feed viewing chamber for just-in-time conveying to the machine throat.

Compact loaders for small throughput applications

The Z Loader brings the flexibility of self-contained vacuum loading to low-throughput applications.

Bring material to small drying hoppers mounted on the machine throat or on a mobile drying and conveying unit. Fill an additive feeder or small blender bin.

The standard Z Loader comes with a 3/8 hp motor, control, a gravity discharge valve or direct feed sight glass, time fill operation, and a vertical feed tube with 10 feet of flexible hose. Pick-up device options include a horizontal bin tube or micro distribution box.

■ CONVEYING RATES UP TO 100 LB/HR

The standard Z Loader can convey up to 50 lb/hour. Add the optional filter blowback to achieve rates up to 100 lb/hour.

■ DEDICATED LOADING CONTROL

Each unit comes with its own control, which can be mounted on the loader or at eye level with the optional remote kit. The optional enhanced control allows volume fill loading control.

■ FAST, NO-TOOLS CLEAN OUT

No-tools access, quick-release motor assembly, drop-in filter and push-fit assembly make maintenance and material changes fast and easy.

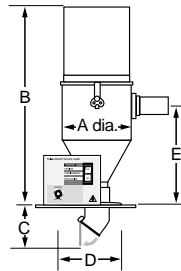
■ CARBON STEEL OR STAINLESS STEEL

Standard Z Loaders are made of durable, powder coated carbon steel. Or you can choose optional stainless steel construction.

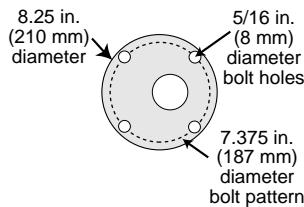
SPECIFICATIONS

SELF-CONTAINED VACUUM LOADERS
Z2HL and Z2DF Models

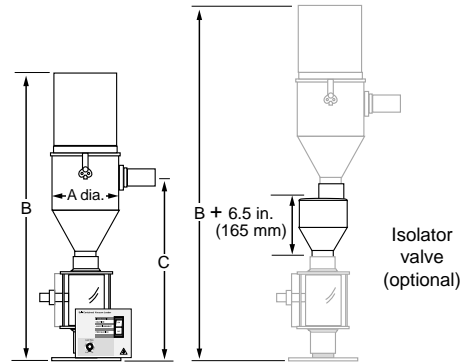
Z2HL HOPPER LOADING MODELS



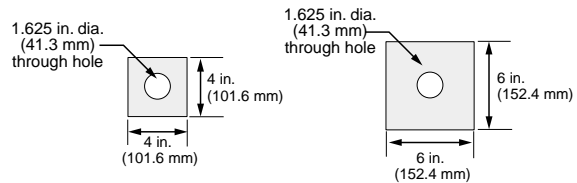
**MOUNTING PLATE
Z2HL**



Z2DF DIRECT FEED MODELS



**MOUNTING PLATE
Z2DF
(two sizes available)**



MODELS	Z2HL	Z2DF
Performance characteristics		
Maximum injection mold machine size	300 tons	300 tons
Maximum extruder size screw in. (mm)	1 {25}	1 {25}
Throughput without blowback* lb/hr {kg/hr}	50 {22.7}	100 {45.4}
Throughput with blowback* lb/hr {kg/hr}	100 {45.4}	100 {45.4}
Maximum conveying distance ft {m}	25 {7.6}	25 {7.6}
Vacuum motor	3/8 Hp, 2 brush	3/8 Hp, 2 brush
Loader volume ft ³ {liters}	0.1 {2.8}	0.1 {2.8}
Material line size in. (mm)	1.5 {38.1}	1.5 {38.1}
Dimensions inches {mm}		
A - Hopper diameter	6.5 {165}	6.5 {165}
B - Height above mounting plate	18.2 {462}	18.5 {470}
C - Depth below mounting plate	2.75 {70}	2.75 {70}
D - Clearance hole diameter	6.625 {168}	2.75 {70}
E - Height to center of material inlet	8.875 {225}	9.4 {240}
Weight lbs {kg}		
Installed	13.9 {6.3}	13.9 {6.3}
Shipping	40 {18}	40 {18}
Voltages Total amps		
120V/1 phase/60 hz	7	7
Compressed air requirements (for optional blowback)		
Pressure psi (bars)	60 {4.14}	60 {4.14}
Consumption ft ³ /min {liters/min}	1.4 {39.6}	1.4 {39.6}
NPT fitting, female	1/4 in.	1/4 in.
Filter type		
Filter area in ² {cm ² }	31 {200}	31 {200}
Material pickup device		
	vertical feed tube and 10 ft. (3 m) flexible hose	

SPECIFICATION NOTES:

* Throughputs are based on conveying virgin material from close distances. The optional compressed-air blowback feature should be ordered if you convey dusty materials and regrinds. Conveying at higher throughputs could result in shortened brush and filter life. For higher throughputs, ask about the DustBeater models or consult with a Conair representative about central vacuum loaders.

Specifications may change without notice. Check with a Conair representative for the most current information.